



## Test Report

No.: GZ0801012125/CHEM

Date: JAN 24, 2008

Page 1 of 4

RED BOARD (DONGGUAN) LTD  
RED BOARD AVENUE, SAME TIME ROAD, CHUNG-TOU ZONE, CHANG-AN TOWN, DONGGUAN, CHINA

The following sample(s) was/were submitted and identified on behalf of the applicant as Immersion Tin printed circuit board

SGS Ref No. : SZ10820307-6.3  
Sample Receiving Date : JAN 18, 2008  
Testing Period : JAN 18, 2008 TO JAN 24, 2008

Test Requested : To determine the Cadmium, Lead, Mercury, Hexavalent Chromium, PBBs (Polybrominated Biphenyls) & PBDEs (Polybrominated Diphenylethers) content in the submitted sample.

Test Method : With reference to IEC 62321 Ed.1 111/54/CDV  
Procedures for the Determination of Levels of Regulated Substances in Electrotechnical Products  
(1) Determination of Cadmium by ICP.  
(2) Determination of Lead by ICP.  
(3) Determination of Mercury by ICP.  
(4) Determination of Hexavalent Chromium by Colorimetric Method.  
(5) Determination of PBBs and PBDEs by GC-MS.

Test Results : Please refer to next page.

Signed for and on behalf of  
SGS-CSTC Ltd.

---

Jiang YongPing, Terry  
Sr. Engineer

Test results by chemical method (Unit: mg/kg)

Test Item(s):	Method (refer to)	No.1	MDL
Cadmium(Cd)	(1)	N.D.	2
Lead (Pb)	(2)	5	2
Mercury (Hg)	(3)	N.D.	2
Hexavalent Chromium (CrVI) by alkaline extraction	(4)	N.D.	2
<b>Sum of PBBs</b>		<b>N.D.</b>	-
Monobromobiphenyl		N.D.	5
Dibromobiphenyl		N.D.	5
Tribromobiphenyl		N.D.	5
Tetrabromobiphenyl		N.D.	5
Pentabromobiphenyl		N.D.	5
Hexabromobiphenyl		N.D.	5
Heptabromobiphenyl		N.D.	5
Octabromobiphenyl		N.D.	5
Nonabromobiphenyl		N.D.	5
Decabromobiphenyl		N.D.	5
<b>Sum of PBDEs</b>	(5)	<b>N.D.</b>	-
Monobromodiphenyl ether		N.D.	5
Dibromodiphenyl ether		N.D.	5
Tribromodiphenyl ether		N.D.	5
Tetrabromodiphenyl ether		N.D.	5
Pentabromodiphenyl ether		N.D.	5
Hexabromodiphenyl ether		N.D.	5
Heptabromodiphenyl ether		N.D.	5
Octabromodiphenyl ether		N.D.	5
Nonabromodiphenyl ether		N.D.	5
Decabromodiphenyl ether		N.D.	5

**Test Part Description:**

No.1 Green "PCB" (mixed)

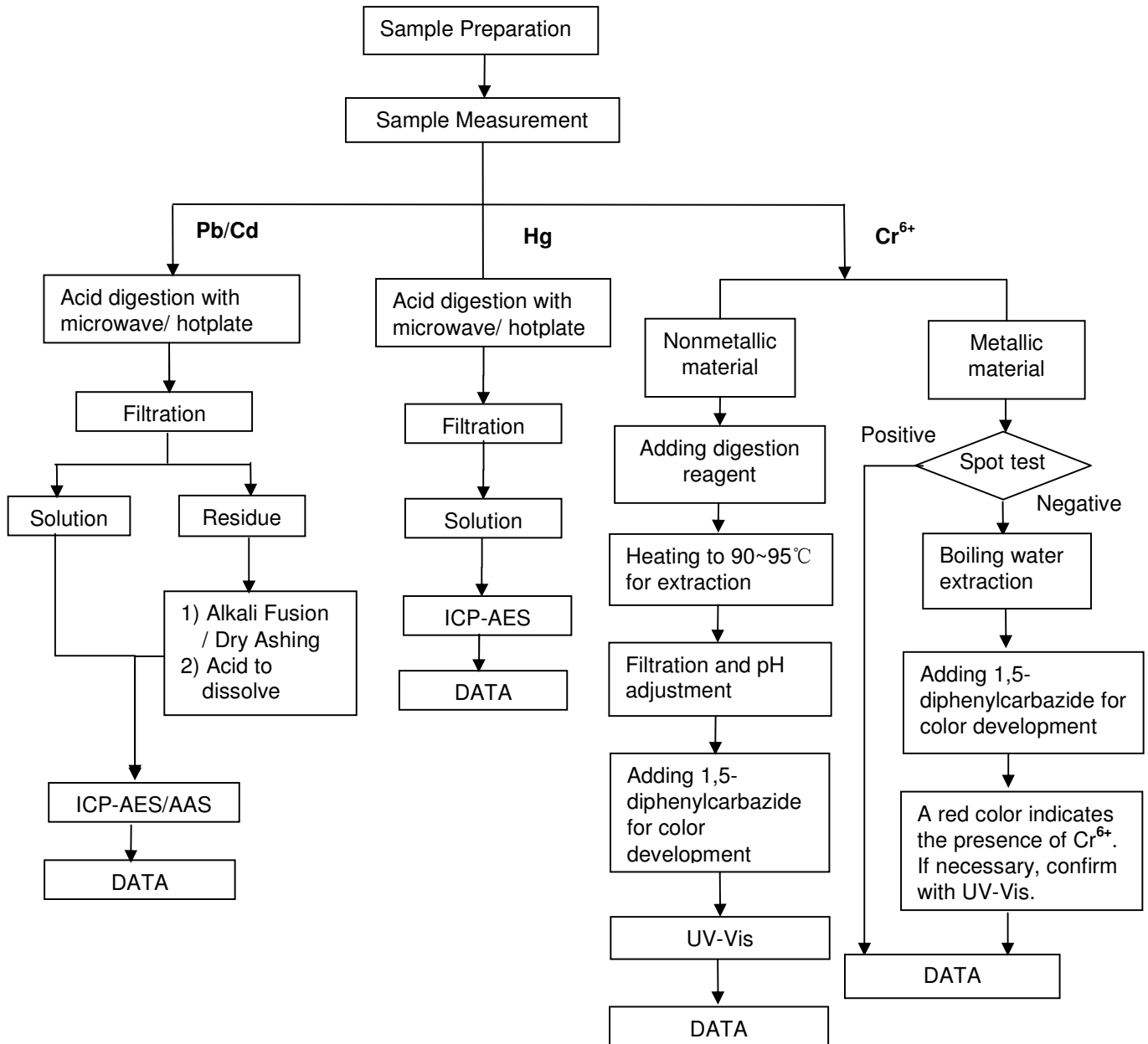
- Note :
1. mg/kg = ppm
  2. N.D. = Not Detected (< MDL)
  3. MDL = Method Detection Limit
  4. "-" = Not regulated

Remark : As requested by client, the testing was conducted as whole / part sample.

**ATTACHMENTS**

**Testing Flow Chart**

- 1) Name of the person who made measurement: David Shen
- 2) Name of the person in charge of measurement: Emily Feng



### Testing Flow Chart

- 1) Name of the person who made measurement: Fiona Xu
- 2) Name of the person in charge of measurement: Nina Wu

